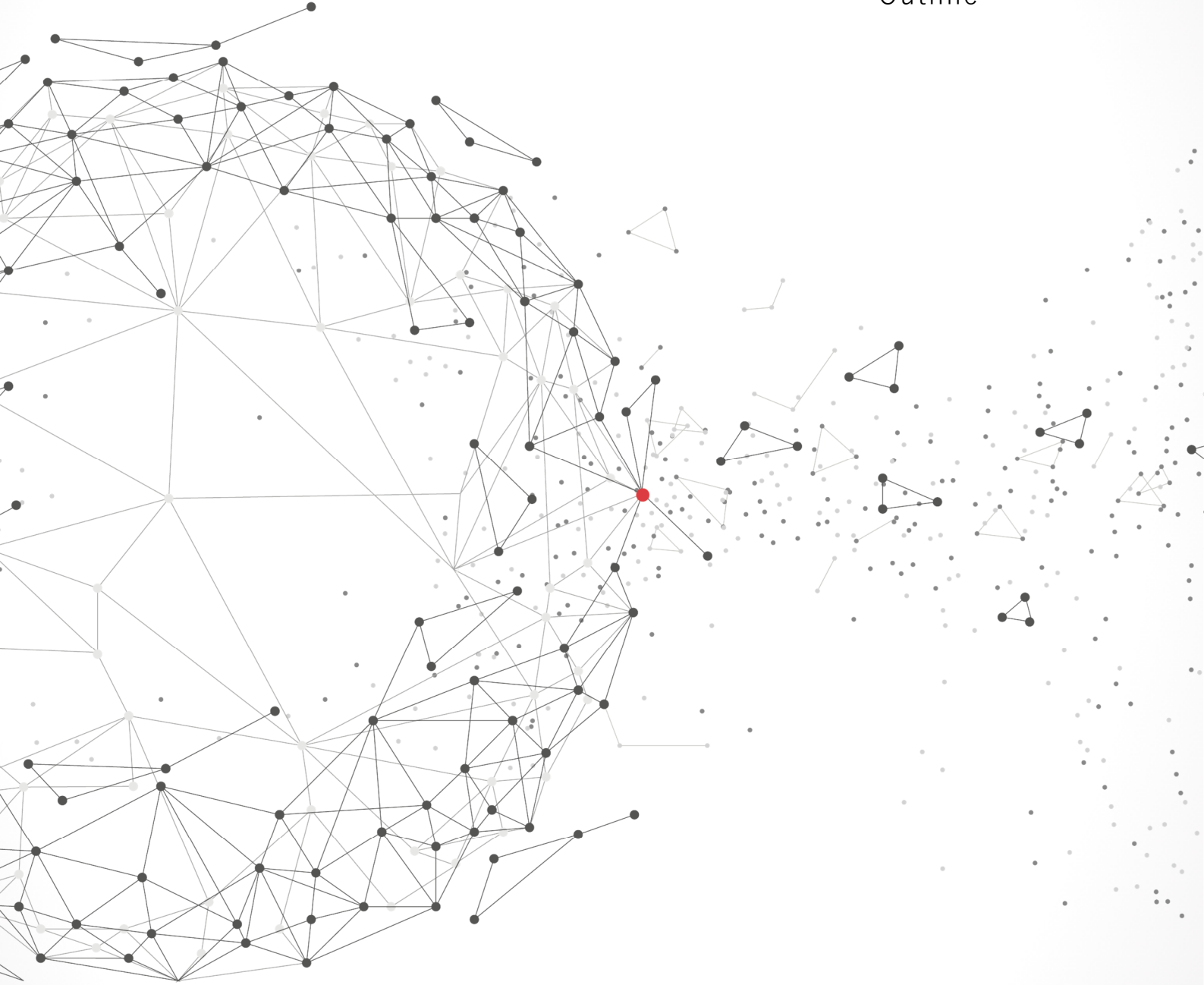
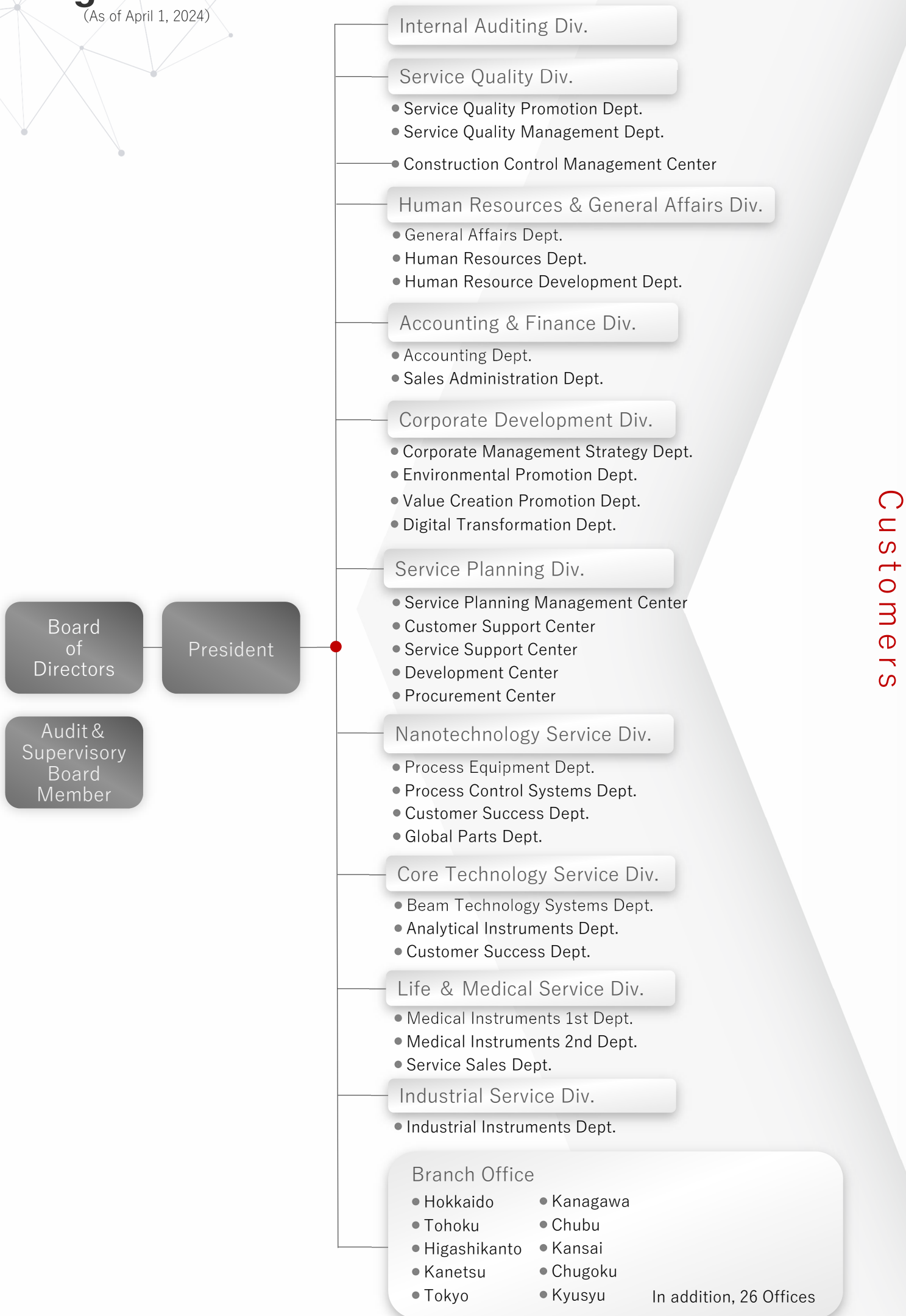


Organization &  
Service Network  
Outline



# Organization

(As of April 1, 2024)



# Service Network (As of April 1, 2024)

[Head Office] Toranomon Hills Business Tower, 1-17-1 Toranomon, Minato-ku, Tokyo 105-6410, Japan

## ■ Offices (City, Pref.)

### [Hokkaido/Tohoku area]

- Hokkaido Branch (Sapporo, Hokkaido)
- Obihiro (Obihiro, Hokkaido)
- Tohoku Branch (Sendai, Miyagi)
- Morioka (Morioka, Iwate)
- Akita (Akita, Akita)
- Sakata (Sakata, Yamagata)
- Fukushima (Koriyama, Fukushima)

### [Kanto/Koshinetsu area]

- Tokyo Branch (Shinjuku, Tokyo)
- Kanagawa Branch (Yokohama, Kanagawa)
- Chiba (Chiba, Chiba)
- Higashi Kanto Branch (Hitachinaka, Ibaraki)
- Tsukuba (Tsukuba, Ibaraki)
- Kashima (Kamisu, Ibaraki)
- Kanetsu Branch (Saitama, Saitama)
- Takasaki (Takasaki, Gunma)
- Niigata (Niigata, Niigata)
- Matsumoto (Matsumoto, Nagano)

### [Chubu/Hokuriku area]

- Chubu Branch (Nagoya, Aichi)
- Shizuoka (Shizuoka, Shizuoka)
- Yokkaichi (Yokkaichi, Mie)
- Kanazawa (Kanazawa, Ishikawa)

## ■ Logistics Center

- Logistics Center (Naka) (Hitachinaka, Ibaraki)
- Logistics Center (Oyama) (Sunto, Shizuoka)
- Logistics Center (Kansai) (Ibaraki, Osaka)
- Logistics Center (Kasado) (Kudamatsu, Yamaguchi)

### [Kansai/Shikoku area]

- Kansai Branch (Osaka, Osaka)
- Kyoto (Kyoto, Kyoto)
- Hyogo (Akashi, Hyogo)
- Takamatsu (Takamatsu, Kagawa)
- Matsuyama (Matsuyama, Ehime)

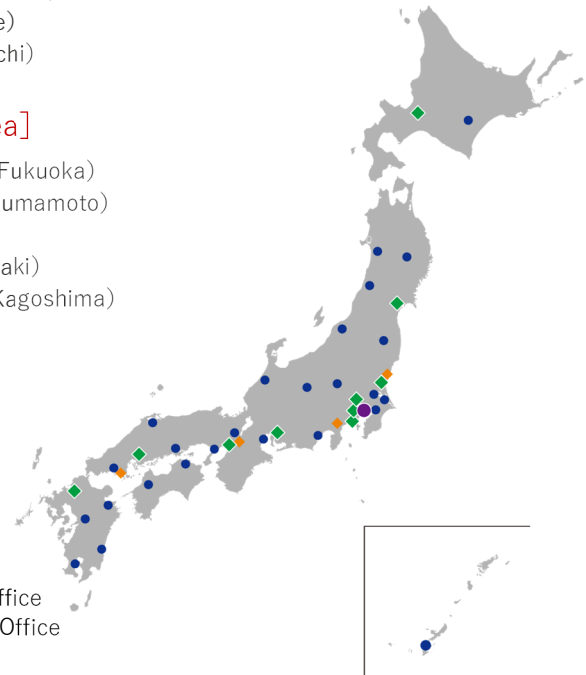
### [Chugoku area]

- Chugoku Branch (Hiroshima, Hiroshima)
- Okayama (Okayama, Okayama)
- Matsue (Matsue, Shimane)
- Shunan (Shunan, Yamaguchi)

### [Kyusyu/Okinawa area]

- Kyusyu Branch (Fukuoka, Fukuoka)
- Kumamoto (Kumamoto, Kumamoto)
- Oita (Oita, Oita)
- Miyazaki (Miyazaki, Miyazaki)
- Kagoshima (Kagoshima, Kagoshima)
- Okinawa (Naha, Okinawa)


- Head Office
  - ◆ Branch Office
  - Office
  - ◆ Logistics Center
- Total of 37 Offices  
Total of 4 Centers



## Customer Support Center (24h Operation, Only in Japan)


Inquiries regarding

Semiconductor Equipment  
Electron Microscopes  
Prove Microscopes  
Analytical Systems  
Measurement Control Systems

 0120-203-813


Inquiries regarding

Medical Systems

 0120-203-812

Inquiries regarding

Service parts and consumables

 0120-224-421

9:00~17:30  
(Weekday)

After the contact person receives the inquiry,  
our professional engineer will respond it.

Outside of  
Business Hours

Available 24 hours at After Hours  
service desk\*

\* Maintenance contract is required for telephone support and engineer dispatch after business hours. (Without contract, we will contact you on the next business day.)  
\* Our engineers will contact you back regarding any safety-related accidents, regardless of whether or not you have a contract with us.